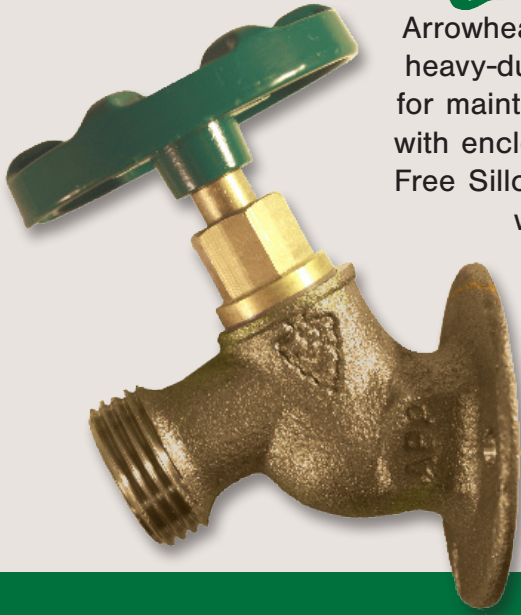




Lead Free Sillcocks Series 255LF - 355LF



Arrowhead Brass 255LF and 355LF series Lead Free Sillcocks are made of heavy-duty Lead Free brass and feature a one-piece O-ring bonnet stem design for maintenance-free, easy operation with years of service and a solid flange with enclosed screw holes. The 255LF (1/2 inch) and 355LF (3/4 inch) Lead Free Sillcocks feature female pipe thread inlet connections and are available with various options and finishes, including model 255PEXLF with 1/2-inch Crimp PEX (ASTM F1807) inlet. The 255LF and 355LF series are certified to NSF/ANSI 372 Lead-Free by IAPMO.



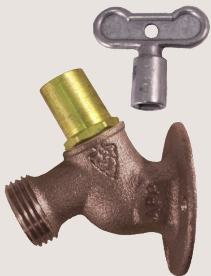
Models

255LF	1/2" Female Iron Pipe Thread x 3/4" Male Hose Thread
355LF	3/4" Female Iron Pipe Thread x 3/4" Male Hose Thread
255PEXLF	1/2" Crimp PEX (ASTM F1807) x 3/4" Male Hose Thread
255SWLF	1/2" Copper Sweat x 3/4" Male Hose Thread
355SWLF	3/4" Copper Sweat x 3/4" Male Hose Thread

Features and Specifications

- Heavy duty lead free brass construction. NSF/ANSI 372 certified Lead Free by IAPMO.
- Utilizes Arrowhead's exclusive no-leak one-piece bonnet with EPDM O-ring seal.
- Integrated brass flange with enclosed screw holes to securely fasten the sillcock to the mounting wall.
- Maximum pressure: 125 PSI. Max temperature: 140° F
- Flow rate: 8-9 GPM at 50 PSI.
- 3-year limited warranty.
- Arrowhead Brass 255LF & 355LF series are available in a variety of options, including:
 - Tamper-proof loose-key lock-shield (# 255LKLF / 355LKLF).
 - Factory-installed back-flow preventer vacuum breaker (# 255BFPLF / 355BFPLF).
 - With Wheel Handle (# 255WHLF / 355WHLF).
 - Nickel plated finish (# 255SATLF / 355SATLF).
- For additional option and finish combinations, please see the Lead Free Commercial Sillcocks Series 25LF & 35LF, which combines loose key, manual or self-draining vacuum breakers, and wheel handle options with brass, nickel plated or polished chrome finishes.

Prevent unwanted water use with Loose Key Models: 255LKLF / 355LKLF



Factory Installed Anti-Siphon Vacuum Breaker: 255BFPLF / 355BFPLF



*Additional options not pictured. Some model options can be combined by special order.



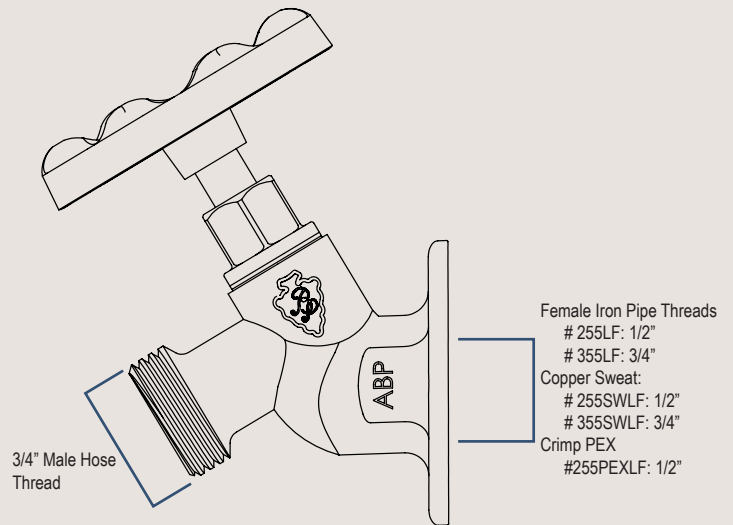


Lead Free Standard Hose Bibs Series 255LF - 355LF

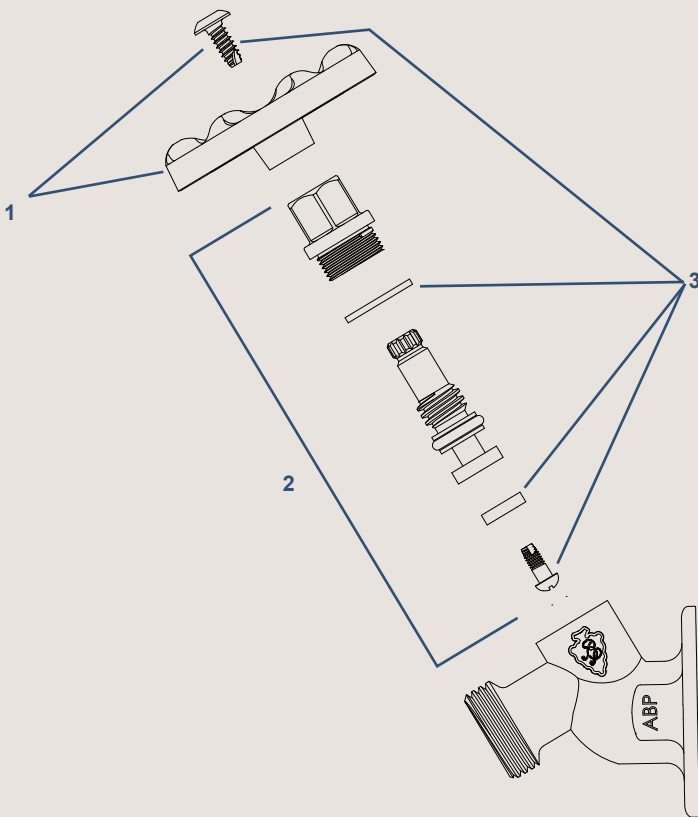
Materials & Dimensions

Component	Material
Valve Body	Lead Free Brass*
Stem	Lead Free Brass*
Bonnet	Lead Free Brass*
O-ring	EPDM
Seat Washer	SBR
Seat Screw	Stainless Steel
Bonnet Washer	Nylon
Handle	Aluminum
Handle Screw	Stainless Steel
PEX Adapter	Lead Free Brass*

* Lead Free is defined as less than 0.25% lead content, certified by IAPMO to NSF/ANSI 372



Part Kits



ID	Part #	Description
1	PK1290	Replacement Green Tee-Handle & Stainless Steel Self-Tapping Screw
2	PK1100	Replacement O-ring Style Stem Assembly for Arrowhead Hose Bibs & Sillcocks
3	PK1000	Stem Rebuild Kit: Seat washer, seat washer screw, nylon bonnet washer & handle screw
Additional Parts (not shown)		
	PK1360	Replacement Fine-Thread Vacuum Breaker (Brass Finish)
	58ABP	Add-On Hose Vacuum Breaker with Set Screw
	PK1150	Replacement Loose-Key Lock-Shield for Arrowhead Hose Bibs & Sillcocks
	PK1250	Replacement Green Wheel & Stainless Steel Self-Tapping Screw