



Lead-Free Washing Machine Valves



221CCLF

Arrowhead Brass Washing Machine Valves are made of heavy-duty Lead-Free brass and feature a one-piece O-ring bonnet stem design for maintenance-free, easy operation with years of service. Arrowhead Brass Washing Machine Valves are available in 5 different models and are certified to NSF/ANSI 372 Lead-Free by IAPMO.



248LF

Features and Specifications

- Heavy duty, nickel plated lead-free brass construction. NSF/ANSI 372 certified Lead-Free by IAPMO.
- Utilizes Arrowhead's exclusive no-leak one-piece bonnet with EPDM O-ring seal.
- Model 248LF and 250LF features 3/4" male hose thread bypass allowing in-line installation for hose thread hook-up. Model 248LF includes reversible plug and 3/4" male hose thread adapter.
- Maximum pressure: 125 PSI. Max temperature: 140° F
- Flow rate: 11 GPM at 50 PSI.
- 3-year limited warranty.

Models

221CCLF	1/2" Copper Compression Inlet x 3/4" Male Hose Thread Outlet
247LF	1/2" Female Iron Pipe Thread Inlet x 3/4" Male Hose Thread Outlet
248LF	1/2" FIP Inlet x 1/2" MIP Outlet with Reversible 3/4" MHT Bypass
249LF	1/2" Female Iron Pipe Thread Inlet x 3/4" Male Hose Thread Outlet
250LF	1/2" FIP Inlet x 1/2" MIP Outlet with 3/4" MHT Bypass



247LF



249LF



250LF





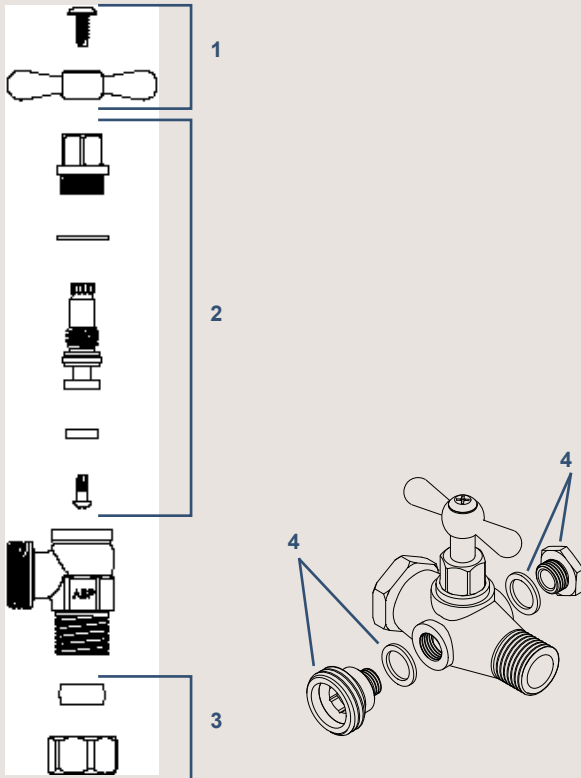
Lead-Free Washing Machine Valves

Materials & Dimensions

Component	Material
Valve Body	Lead-Free Brass*
Stem	Lead-Free Brass*
Bonnet	Lead-Free Brass*
Hose Adapter	Lead-Free Brass*
Bypass Plug	Lead-Free Brass*
O-ring	EPDM
Seat Washer	SBR
Seat Screw	Stainless Steel
Bonnet Washer	Nylon
Handle	Aluminum
Handle Screw	Stainless Steel
Nut & Ferrule	Brass

* Lead Free is defined as less than 0.25% lead content, certified by IAPMO to NSF/ANSI 372

Part Kits



ID	Part #	Description
1	PK1260	Replacement Burnished Tee-Handle & Stainless Steel Self-Tapping Screw
2	PK1110	Replacement O-ring Style Nickel Plated Stem Assembly for Arrowhead Brass Washing Machine Valves
3	PK1170	Replacement brass compression nut & ferrule (Nickel Plated)
4	PK1200	Replacement Bypass Hose Adapter, Plug & Gaskets (2) for 248LF Series.
Additional Parts (not shown)		
	58ABPCHR	Add-On Hose Vacuum Breaker with Set Screw - Chrome Finish
	PK1155	Replacement Loose-Key Lock-Shield for Arrowhead Hose Bibs & Sillcocks - Nickel Plated