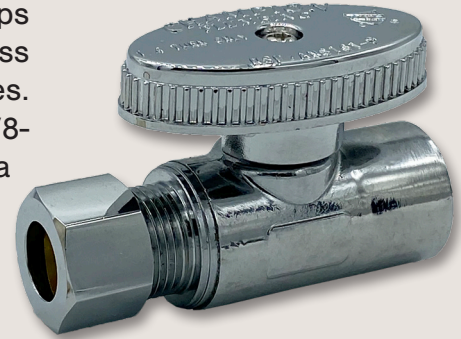




## Copper Sweat Supply Stops



Arrowhead Brass angle and straight supply stops are made of lead-free dezincification resistant brass and are available in a variety of connection types. The Copper Sweat Supply Stop Valves, with 3/8-inch or 1/4-inch compression outlets, feature a polished chrome finish and QuickTurn® operation. Arrowhead Brass Supply Stops are certified to NSF/ANSI 61 and cUPC listed by IAMPO.



### Models

- AS50S25C** Angle Supply Stop, 1/2" Copper Sweat x 1/4" OD Compression
- AS50S37C** Angle Supply Stop, 1/2" Copper Sweat x 3/8" OD Compression
- SS50S37C** Straight Supply Stop, 1/2" Copper Sweat x 3/8" OD Compression

### Features and Specifications

- Forged lead-free brass construction, chrome plated body. NSF/ANSI 61 certified by IAPMO.
- Angle and straight models with 1/2-inch copper sweat inlet connections.
- QuickTurn® 1/4 ball-valve operation.
- 3-year limited warranty.

Model	Length (in)	Width (in)	Height (in)	Weight (lbs)
AS50S25C	2	1	1.9	0.18
AS50S37C	2.125	1	1.9	0.18
SS50S37C	2.15	1	1.385	0.17

Component	Material
Valve Body	Lead-Free DZR Brass, Chrome Plated
Seal	PTFE
Ball	Lead-Free DZR Brass, Chrome Plated
O-Ring	EPDM
Stem	Lead-Free DZR Brass, Chrome Plated
Handle	ABS
Lock Nut	Stainless Steel SS304
Bonnet	Lead-Free DZR Brass, Chrome Plated
Ferrule	Brass, Chrome Plated
Nut	Brass, Chrome Plated

