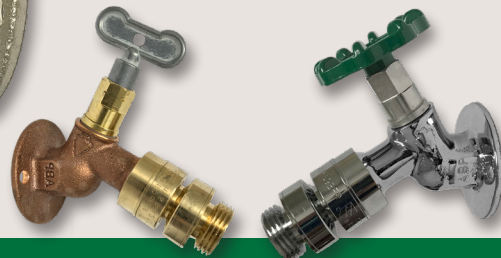




## Lead Free Commercial Sillcocks 28LF - 38LF Series



Arrowhead Brass Commercial Sillcocks are made of heavy-duty Lead Free brass and feature a one-piece O-ring style Lock Shield, ASSE 1011 Certified Self-Draining Anti-Siphon Vacuum Breaker and includes a green wheel handle and optional loose key. Arrowhead Brass Commercial Sillcocks are available in 1/2" (28LF) or 3/4" (38LF) female pipe thread or 1/2" (28SWLF) or 3/4" (38SWLF) copper sweat inlet connections, and are also available in brass, nickel-plated or polished chrome finishes. Arrowhead Commercial Sillcocks are certified to NSF/ANSI 372 Lead-Free by IAPMO.



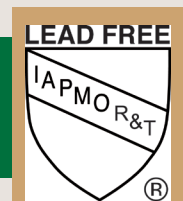
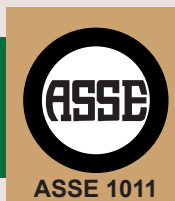
### Models

<b>28LF</b>	1/2" Female Iron Pipe Thread x 3/4" Male Hose Thread, Rough Brass
<b>28PLF</b>	1/2" Female Iron Pipe Thread x 3/4" Male Hose Thread, Nickel Plated
<b>28CLF</b>	1/2" Female Iron Pipe Thread x 3/4" Male Hose Thread, Polished Chrome
<b>38LF</b>	3/4" Female Iron Pipe Thread x 3/4" Male Hose Thread, Rough Brass
<b>38PLF</b>	3/4" Female Iron Pipe Thread x 3/4" Male Hose Thread, Nickel Plated
<b>38CLF</b>	3/4" Female Iron Pipe Thread x 3/4" Male Hose Thread, Polished Chrome

### Features and Specifications

- Heavy duty lead free brass construction. NSF/ANSI 372 certified Lead Free by IAPMO.
- Utilizes Arrowhead's exclusive no-leak one-piece bonnet with EPDM O-ring seal or maintenance-free, easy operation with years of service.
- Integrated brass flange with enclosed screw holes to securely fasten the sillcock to the wall or wall box.
- Includes ASSE 1011 anti-siphon vacuum breaker, tamper-resistant lock-shield bonnet with green wheel handle.
- Self-draining vacuum breaker automatically drains the sillcock upon shut off if the hose is disconnected.
- For loose key operation to prevent unwanted water use, simply remove the green handle and use the included removable loose key to operate.
- Available in 1/2" (28LF) and 3/4" (38LF) female iron pipe thread, and in rough brass, nickel-plated (P) or polished chrome (C) finishes. Also Available in 1/2" (# 28SWLF) or 3/4" (# 38SWLF) Copper Sweat connections.
- Maximum pressure: 128 PSI. Max temperature: 140° F
- Flow rate: 5-6 GPM at 50 PSI.
- 3-year limited warranty.
- ASSE 1011 certified.

Now available, Commercial Sillcock Wall Box: # ACSB.  
See next page for more details.



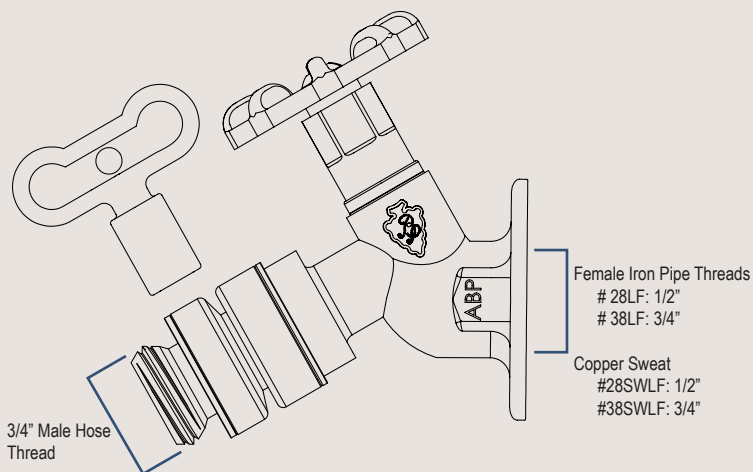


# Lead Free Commercial Sillcocks 28LF - 38LF Series

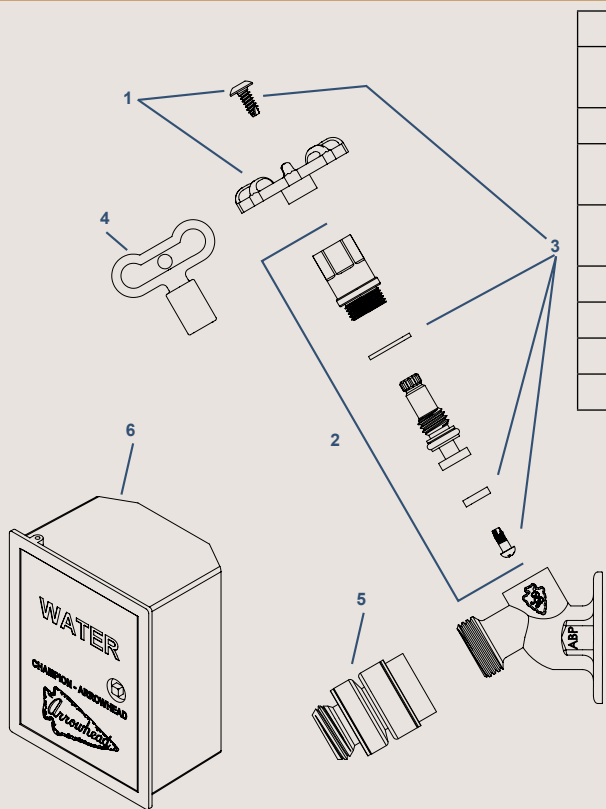
## Materials & Dimensions

Component	Material
Valve Body	Lead Free Brass*
Stem	Lead Free Brass*
Lock-Shield Bonnet	Lead Free Brass*
O-ring	EPDM
Seat Washer	SBR
Seat Screw	Stainless Steel
Bonnet Washer	Nylon
Handle & Key	Aluminum
Handle Screw	Stainless Steel
Vacuum Breaker	Lead Free Brass*, POM, NBR & Stainless Steel

\* Lead Free is defined as less than 0.28% lead content, certified by IAPMO to NSF/ANSI 372



## Part Kits



ID	Part #	Description
1	PK1280	Replacement Green Wheel Handle & Stainless Steel Self-Tapping Screw
2	PK1150	Replacement Lock-Shield Stem Assembly & Loose Key
2	PK1155	Replacement Lock-Shield Stem Assembly & Loose Key - Chrome Plated
3	PK1000	Stem Rebuild Kit: Seat washer, seat washer screw, nylon bonnet washer & handle screw
4	PK1300	Replacement Loose Key
5	PK1400	Replacement Vacuum Breaker
5	PK1395	Replacement Vacuum Breaker - Chrome Plated
6	ACSB	Commercial Sillcock Wall Box, Nickel Plated Brass

### Model ACSB Rough-In Dimensions

