



## Commercial Sillcock Wall Box ACSB

Arrowhead Brass ACSB series Commercial Sillcock Wall Box is made of heavy-duty brass and is designed to house all Arrowhead Commercial Sillcocks. The ACSB features a loose key operated lock to protect and prevent the use of the enclosed Arrowhead Brass 25LF & 35LF series Commercial Sillcock, or the 28LF & 38LF Self-Draining Commercial Sillcock, with or without the green wheel handle.



### Features and Specifications

- Heavy duty brass construction.
- For use with Arrowhead Commercial Sillcocks
- 3-year limited warranty.

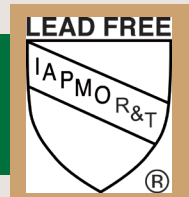
Models

<b>ACSB</b>	Commercial Sillcock Wall Box
<b>220LF</b>	1/2" Female Iron Pipe Thread Inlet x 3/4" Female Hose Thread Outlet

Factory installed Vacuum Breaker:  
222BFPLF / 220BPLF



\*Some model options can be combined by special order.



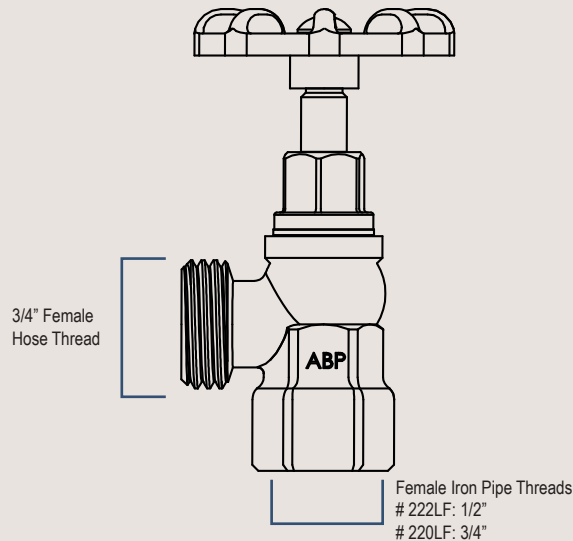


# Lead Free Boiler Drains Series 222LF - 220LF

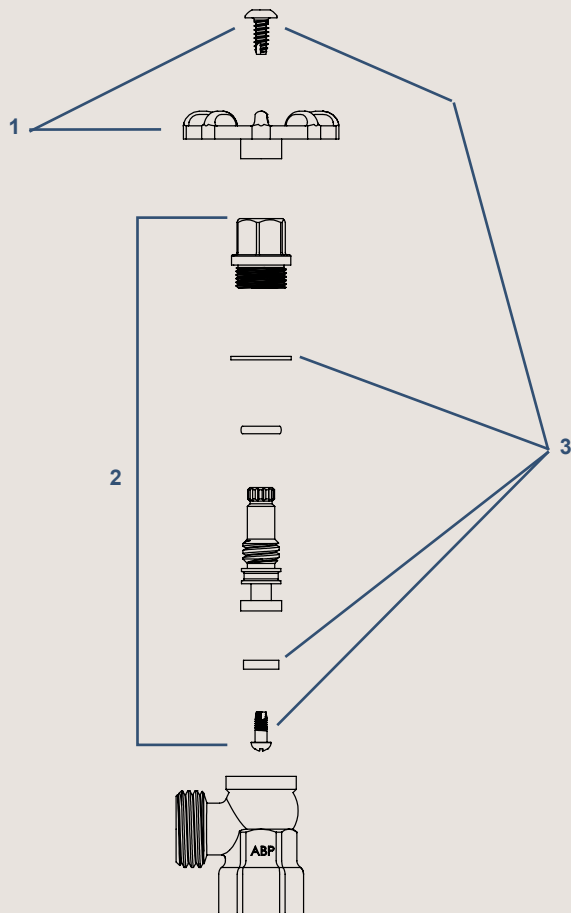
## Materials & Dimensions

Component	Material
Valve Body	Lead Free Brass*
Stem	Lead Free Brass*
Bonnet	Lead Free Brass*
O-ring	EPDM
Seat Washer	SBR
Seat Screw	Stainless Steel
Bonnet Washer	Nylon
Handle	Aluminum
Handle Screw	Stainless Steel

\* Lead Free is defined as less than 0.25% lead content, certified by IAPMO to NSF/ANSI 372



## Part Kits



ID	Part #	Description
1	PK1250	Replacement Green Wheel & Stainless Steel Self-Tapping Screw
2	PK1100	Replacement O-ring Style Stem Assembly for Arrowhead Boiler Drains & Sillcocks
3	PK1000	Stem Rebuild Kit: Seat washer, seat washer screw, nylon bonnet washer & handle screw
Additional Parts (not shown)		
	PK1360	Replacement Fine-Thread Vacuum Breaker (Brass Finish)
	58ABP	Add-On Hose Vacuum Breaker with Set Screw
	PK1150	Replacement Loose-Key Lock-Shield for Arrowhead Boiler Drains & Sillcocks