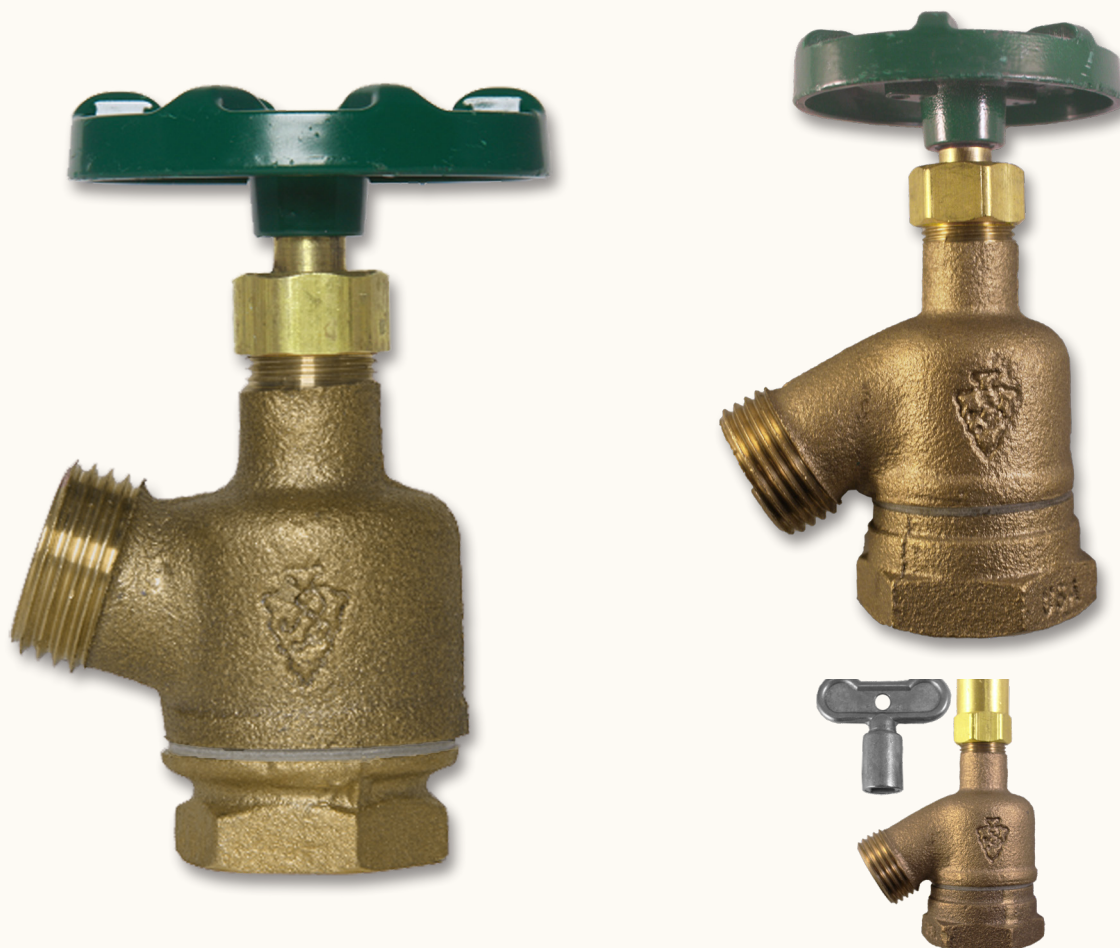


# Lead-Free Garden Valves 930LF - 980LF Series



## Lead-Free Garden Valves

### Features & Benefits

- Heavy-duty lead-free brass construction. NSF/ANSI 372 certified Lead Free by IAPMO.
  - Inlet connections: 1" female iron pipe threads
  - Utilizes Arrowhead's exclusive no-leak one-piece bonnet with EPDM O-ring seal
  - Maximum pressure: 125 PSI. Max temperature: 140° F
  - Flow rate: 9-10 GPM at 50 PSI.
  - 3-year limited warranty.
  - ASSE 1011 certified
- Available in:
    - Bent nose, 1" FIP thread inlet **(930LF)**
    - Inverted nose, 1" FIP thread inlet **(980LF)**
  - Also Available with tamper-proof loose-key lock-shield **(930LKLF or 980LKLF)**



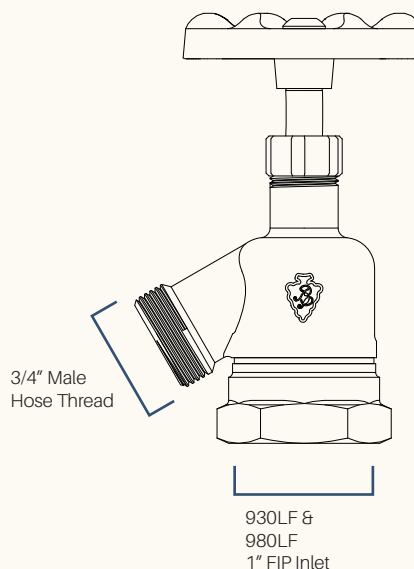


Lead-Free Garden Valves  
930LF - 980LF Series

## Materials & Dimensions

Component	Material
Valve Body	Lead-Free Brass*
Base Nut	Lead-Free Brass*
Body Seal	Fiber Washer
Stem	Lead-Free Brass*
Packing Nut	Lead-Free Brass*
Packing	Graphite
Seat Washer	SBR
Seat Screw	Stainless Steel
Bonnet Washer	Nylon
Handle	Aluminum
Handle Screw	Stainless Steel

\* Lead Free is defined as less than 0.25% lead content, certified by IAPMO to NSF/ANSI 372



## Repair & Replacement Parts

### Replacement Green Oval Handle



# PK1290

Replacement green oval handle & stainless steel self-tapping screw

### Base Nut and Fiber Washer



# PK1240

Base nut and fiber washer for 1-inch garden valves

### Replacement 2-Piece Style Stem Assembly



# PK1130

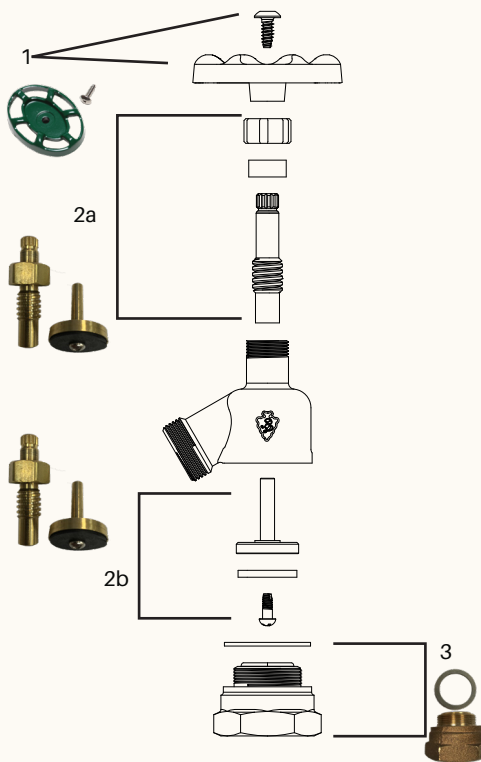
Replacement 2-piece style stem assembly for 930LF & 980LF series garden valves

### Replacement Fine-Thread Vacuum Breaker



# PK1360

Replacement fine-thread vacuum breaker - brass finish



**WARNING:** This product can expose you to chemicals including lead, which is known to the State of California to cause, cancer and reproductive harm. For more information, go to [www.P65Warnings.ca.gov](http://www.P65Warnings.ca.gov)